

ANGLE	± 5°	REV	LOCAS	DESCRIPTION	DESIGN	DATE	卫国峰
X.XXX	± 0.05	01			DRAWN	DATE	尚伟
X.XX	± 0.15	02			CHECKED	DATE	吴汉学
X.X	± 0.25	03			AUDITED	DATE	龚劲松
X	± 0.50	04			APPROVED	DATE	eric

Note:

Machanical
Mating force:40.0kgf max
Unmating force:4.4kgf Min
Durability:30Cycles

Electrical
Current Rating:0.5A max. Percontact
Contact Resistance:55mΩ max(Initial),75mΩ max(After)
Dielectric Withstanding Voltage:200VAC
Insulation Resistance 100mega ohms min. at 500 VDC

Physical
Housing:thermoplastic, UL 94V-0 rated,inWhite Color
Contact: Copper alloy
Operating Temperature:-40°C to +85°C

PART NO.:

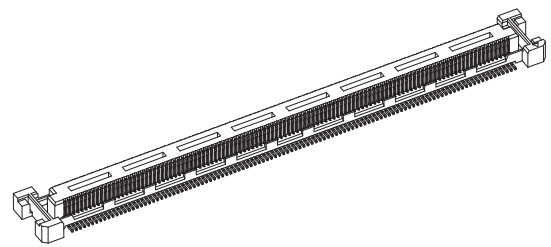
YL 2XX-GXXP-B0R

- YL
- 2XX
- GXXP
- B0R

PACKING: R:REEL
O:MYLAR
COLOR:BLACK
PLUG
PIN

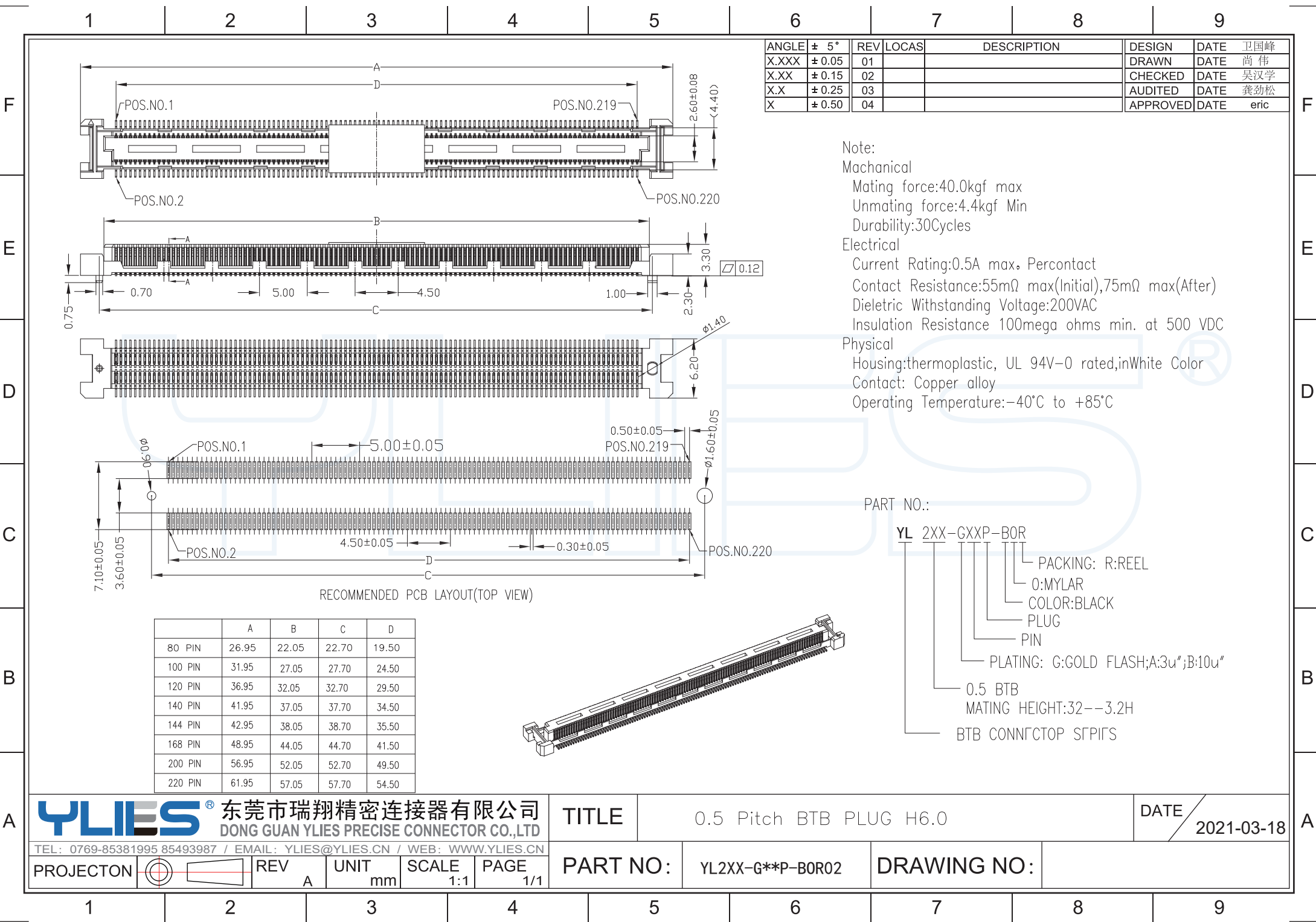
PLATING: G:GOLD FLASH;A:3u";B:10u"

0.5 BTB
MATING HEIGHT:32--3.2H
BTB CONNCTOP SIFIFS



RECOMMENDED PCB LAYOUT(TOP VIEW)

	A	B	C	D
80 PIN	26.95	22.05	22.70	19.50
100 PIN	31.95	27.05	27.70	24.50
120 PIN	36.95	32.05	32.70	29.50
140 PIN	41.95	37.05	37.70	34.50
144 PIN	42.95	38.05	38.70	35.50
168 PIN	48.95	44.05	44.70	41.50
200 PIN	56.95	52.05	52.70	49.50
220 PIN	61.95	57.05	57.70	54.50



东莞市瑞翔精密连接器有限公司 DONG GUAN YLIES PRECISE CONNECTOR CO.,LTD				TITLE			0.5 Pitch BTB PLUG H6.0			DATE		2021-03-18	
TEL: 0769-85381995 85493987 / EMAIL: YLIES@YLIES.CN / WEB: WWW.YLIES.CN				PART NO.:		YL2XX-G**P-B0R02		DRAWING NO.:					
PROJECTON		REV	UNIT	SCALE	PAGE								
		A	mm	1:1	1/1								