

1 2 3 4 5 6 7 8 9

ANGLE	± 5°	REV	LOCAS	DESCRIPTION
X.XXX	± 0.05	01		
X.XX	± 0.15	02		
X.X	± 0.25	03		
X	± 0.50	04		

DESIGN	DATE	卫国峰
DRAWN	DATE	尚伟
CHECKED	DATE	吴汉学
AUDITED	DATE	龚劲松
APPROVED	DATE	eric

Specifications/备注 (Remark)

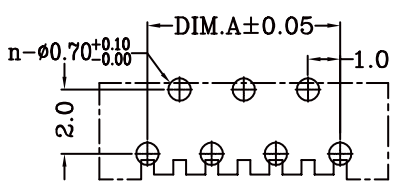
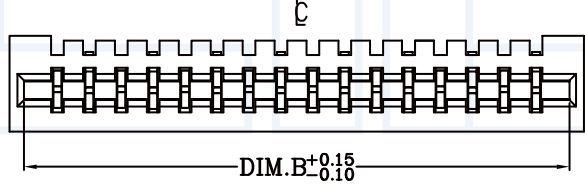
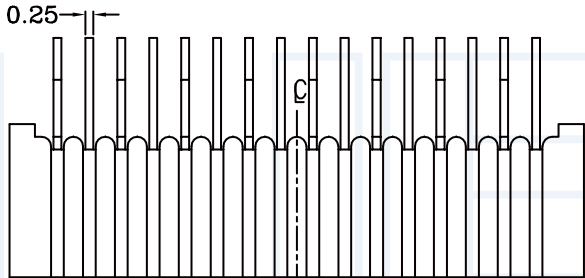
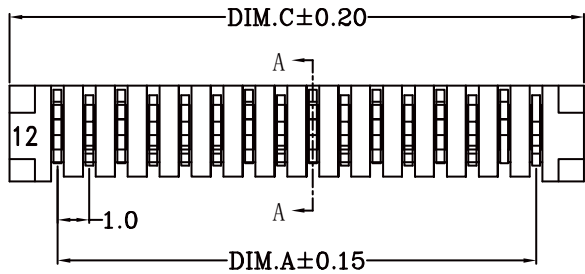
1-材料 (MATERIAL)
 胶芯: PA9T UL94V-0
 Housing: PA9T UL94V-0
 端子(焊片): 磷青铜
 Contact: Phosphor bronze

2-特性 (characteristics):
 额定电压: 50V AC/DC .
 Voltage Rating: 50V AC/DC.
 额定电流: 0.5 AMP.
 Raring Current: 0.5AMP .
 接触阻抗: ≤20mΩ MAX.
 Contact Resistance: ≤20mΩ MAX.
 绝缘阻抗: ≥800MΩMIN.
 Insulating Resistance: ≥800MΩMIN.
 耐电压: 500V AC/MINUTE
 Withstanding Voltage: 500V AC/MINUTE
 温度范围: -25度至+85度
 Temperature Range: -25°Cto +85°C

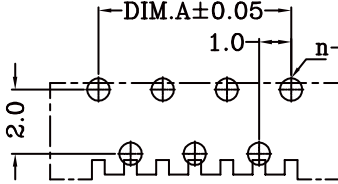
ORDERING INFORMATION

FPXX - XX XX X XX X

SERLES NO 10:1.0mm	INSULATOR MATERIAL A:PA46 B:PA66 C:PA9T D:LCP	CONTACT SHAPE U:UPPER D:DOWN S:STRAIGHT	PACKING A:PE Bag B:TUBE C:TRAY
NO.OF PINS Per Row 04-40P			
CONTACT PLATING FULL OF GOLD SEMI-GOLD S1=ORDINARY TIN PLATED S2=MATTE TIN PLATED S3=TIN-PLATED HIGH-TEMPERATURE			

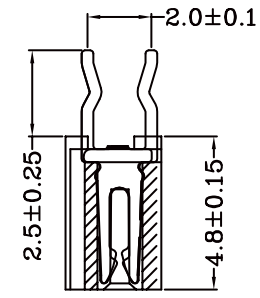


正针 PCB 寸法

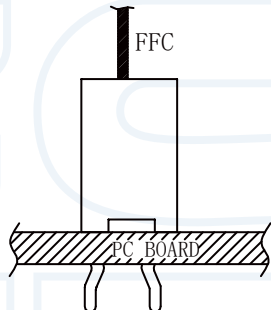


反针 PCB 寸法

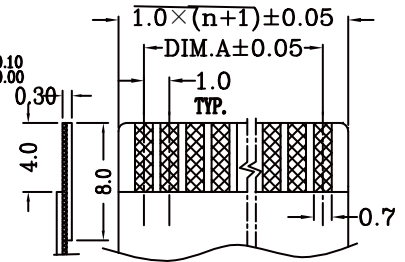
Positive needle PCB LAYOUT Versa needle PCB LAYOUT



SEC: A-A



ASSEMBLY LAYOUT
安装图



适用扁平电缆 (Proper cable)

Pin	A	B	C
4	3.00	5.10	6.20
5	4.00	6.10	7.20
6	5.00	7.10	8.20
7	6.00	8.10	9.20
8	7.00	9.10	10.20
9	8.00	10.10	11.20
10	9.00	11.10	12.20
11	10.00	12.10	13.20
12	11.00	13.10	14.20
13	12.00	14.10	15.20
14	13.00	15.10	16.20
15	14.00	16.10	17.20
16	15.00	17.10	18.20
17	16.00	18.10	19.20
18	17.00	19.10	20.20
19	18.00	20.10	21.20
20	19.00	21.10	22.20
21	20.00	22.10	23.20
22	21.00	23.10	24.20
23	22.00	24.10	25.20
24	23.00	25.10	26.20
25	24.00	26.10	27.20
26	25.00	27.10	28.20
27	26.00	28.10	29.20
28	27.00	29.10	30.20
29	28.00	30.10	31.20
30	29.00	31.10	32.20
31	30.00	32.10	33.20
32	31.00	33.10	34.20
33	32.00	34.10	35.20
34	33.00	35.10	36.20
35	34.00	36.10	37.20
36	35.00	37.10	38.20
37	36.00	38.10	39.20
38	37.00	39.10	40.20
39	38.00	40.10	41.20
40	39.00	41.10	42.20

YLIES 东莞市瑞翔精密连接器有限公司
 DONG GUAN YLIES PRECISE CONNECTOR CO.,LTD

Tel:0769-85381995 / Fax:0769-85493987 / Email: ylies@ylies.cn / Web:www.ylies.cn

TITLE 456-1.0mm FPC插座 180度错脚位 B型双面接

DATE 2018-02-18

PROJECTON REV A UNIT mm SCALE 1:1 PAGE 1/1

PART NO: FP10-XXS1CSB

DRAWING NO:

1 2 3 4 5 6 7 8 9