

ANGLE	± 5°	REV	LOCAS	DESCRIPTION	DESIGN	DATE	卫国峰
X.XXX	± 0.05	01			DRAWN	DATE	尚伟
X.XX	± 0.15	02			CHECKED	DATE	吴汉学
X.X	± 0.25	03			AUDITED	DATE	龚劲松
X	± 0.50	04			APPROVED	DATE	eric

**Specifications/备注 (Remark)**

1-材料 (MATERIAL)  
 胶芯: LCP UL94V-0  
 Housing:LCP UL94V-0  
 端子(焊片): 磷青铜  
 Contact: Phosphor bronze

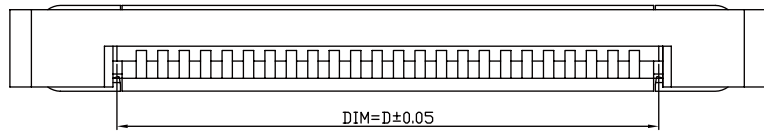
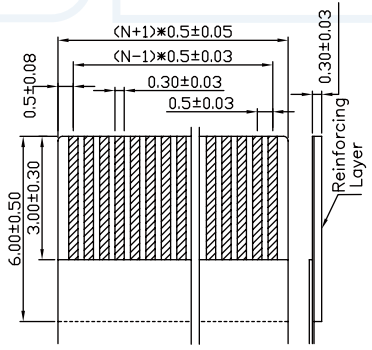
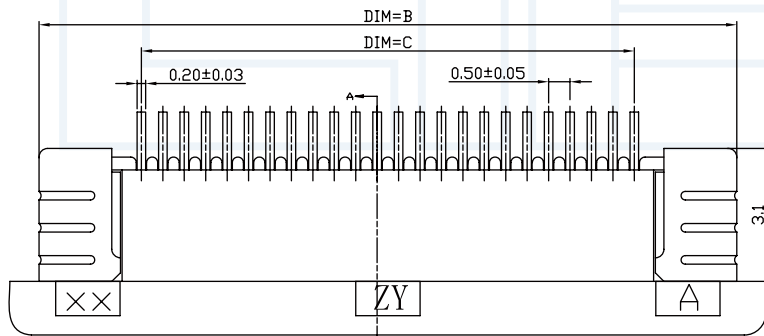
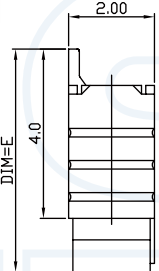
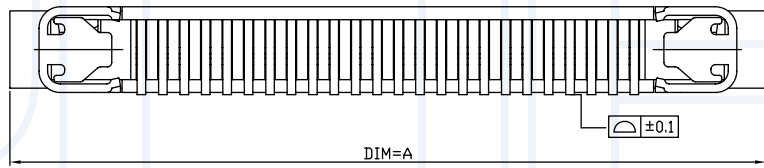
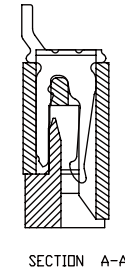
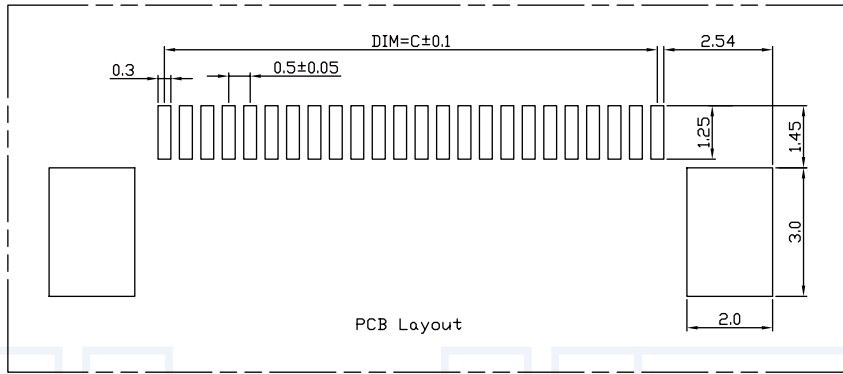
2-特性 (characteristics):  
 额定电压: 50V AC/DC .  
 Voltage Rating:50V AC/DC.  
 额定电流: 0.4 AMP.  
 Raring Current:0.4 AMP .  
 接触阻抗: ≤20mΩ MAX.  
 Contact Resistance:≤20mΩ MAX.  
 绝缘阻抗: ≥500MΩMIN.  
 Insulating Resistance:≥500MΩMIN.  
 耐压: 200V AC/MINUTE  
 Withstanding Voltage:200V AC/MINUTE  
 温度范围: -25度至+85度  
 Temperture Range: -25°Cto +85°C

**ORDERING INFORMATION**

**FPXX XX XX X XX X**

SERLES NO 05:0.5mm	INSULATOR A:PA46 B:PA66 C:PA9T D:LCP	MATERIAL A:PA46 B:PA66 C:PA9T D:LCP	CONTACT SHAPE U:UPPER D:DOWN X:FLIP
NO.OF PINS Per Row 04-60P			
CONTACT PLATING FULL OF GOLD SEMI-GOLD S1=ORDINARY TIN PLATED S2=MATTE TIN PLATED S3=TIN-PLATED HIGH-TEMPERATURE			PACKING A:PE Bag B:TUBE C:TRAY

注: 当PIN位为30P以下, 锁扣材质为PA46,  
 当PIN位为30P以上, 锁扣材质为LCP.



PIN数	A	B	C	D	E
60P	35.6	34.5	29.50	30.60	
59P	35.1	34.0	29.00	30.10	
58P	34.6	33.5	28.50	29.60	
57P	34.1	33.0	28.00	29.10	
56P	33.6	32.5	27.50	28.60	
55P	33.1	32.0	27.00	28.10	
54P	32.6	31.5	26.50	27.60	
53P	32.1	31.0	26.00	27.10	
52P	31.6	30.5	25.50	26.60	
51P	31.1	30.0	25.00	26.10	
50P	30.6	29.5	24.50	25.60	
49P	30.1	29.0	24.00	25.10	
48P	29.6	28.5	23.50	24.60	5.7
47P	29.1	28.0	23.00	24.10	
46P	28.6	27.5	22.50	23.60	
45P	28.1	27.0	22.00	23.10	
44P	27.6	26.5	21.50	22.60	
43P	27.1	26.0	21.00	22.10	
42P	26.6	25.5	20.50	21.60	
41P	26.1	25.0	20.00	21.10	
40P	25.6	24.5	19.50	20.60	
39P	25.1	24.0	19.00	20.10	
38P	24.6	23.5	18.50	19.60	
37P	24.1	23.0	18.00	19.10	
36P	23.6	22.5	17.50	18.60	
35P	23.1	22.0	17.00	18.10	
34P	22.6	21.5	16.50	17.60	
33P	22.1	21.0	16.00	17.10	
32P	21.6	20.5	15.50	16.60	
31P	21.1	20.0	15.00	16.10	
30P	20.6	19.5	14.50	15.60	
29P	20.1	19.0	14.00	15.10	
28P	19.6	18.5	13.50	14.60	
27P	19.1	18.0	13.00	14.10	
26P	18.6	17.5	12.50	13.60	
25P	18.1	17.0	12.00	13.10	
24P	17.6	16.5	11.50	12.60	
23P	17.1	16.0	11.00	12.10	
22P	16.6	15.5	10.50	11.60	
21P	16.1	15.0	10.00	11.10	
20P	15.6	14.5	09.50	10.60	
19P	15.1	14.0	09.00	10.10	5.2
18P	14.6	13.5	08.50	09.60	
17P	14.1	13.0	08.00	09.10	
16P	13.6	12.5	07.50	08.60	
15P	13.1	12.0	07.00	08.10	
14P	12.6	11.5	06.50	07.60	
13P	12.1	11.0	06.00	07.10	
12P	11.6	10.5	05.50	06.60	
11P	11.1	10.0	05.00	06.10	
10P	10.6	9.5	4.50	5.60	
9P	10.1	9.0	4.00	5.10	
8P	9.6	8.5	3.50	4.60	
7P	9.1	8.0	3.00	4.10	
6P	8.6	7.5	2.50	3.60	
5P	8.1	7.0	2.00	3.10	
4P	7.6	6.5	1.50	2.60	

**YLIES** 东莞市瑞翔精密连接器有限公司  
 DONG GUAN YLIES PRECISE CONNECTOR CO.,LTD

TITLE: 444-0.5mm FPC插座 上接式  
 DATE: 2018-02-18

Tel:0769-85381995 / Fax:0769-85493987 / Email: ylies@ylies.cn / Web:www.ylies.cn

PROJECTON REV A UNIT mm SCALE 1:1 PAGE 1/1

PART NO: FP05-XXS1DUB DRAWING NO: