

ANGLE	± 5°	REV	LOCAS	DESCRIPTION	DESIGN	DATE	卫国防
X.XXX	± 0.05	01			DRAWN	DATE	尚伟
X.XX	± 0.15	02			CHECKED	DATE	吴汉学
X.X	± 0.25	03			AUDITED	DATE	龚劲松
X	± 0.50	04			APPROVED	DATE	eric

Specifications/备注 (Remark)

1-材料 (MATERIAL)

端子: 磷青铜

Contact: Phosphor bronze

2-特性 (characteristics):

额定电压: 125V AC/DC .

Voltage Rating: 125V AC/DC .

额定电流: 2 AMP (AWG #24-30) .

Rating Current: 2 AMP (AWG #24-30) .

接触阻抗: ≤10mΩ MAX.

Contact Resistance: ≤10mΩ MAX .

绝缘阻抗: ≥1000MΩMIN.

Insulating Resistance: ≥1000MΩMIN.

耐电压: 500V AC/MINUTE

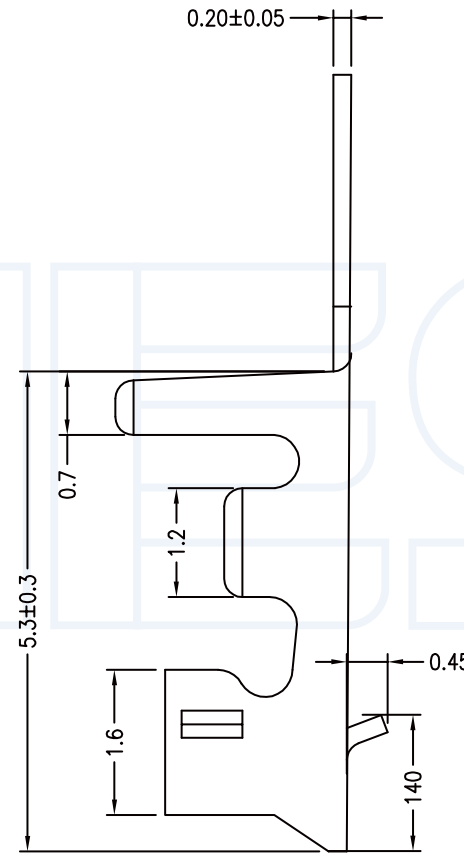
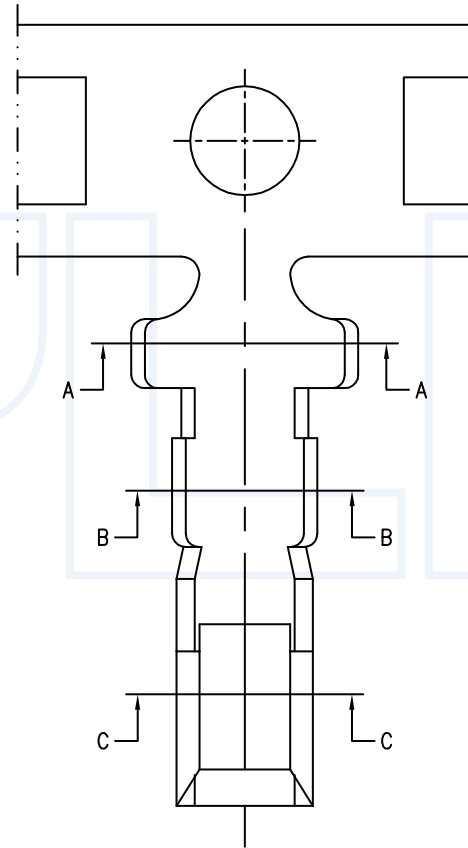
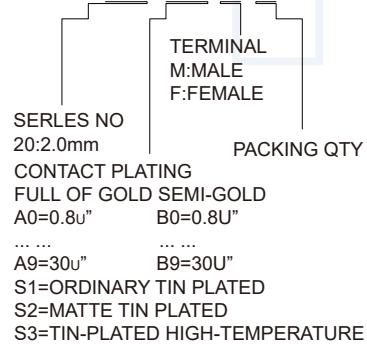
Withstanding Voltage: 500V AC/MINUTE

温度范围: -25度至+85度

Temperature Range: -25°C to +85°C

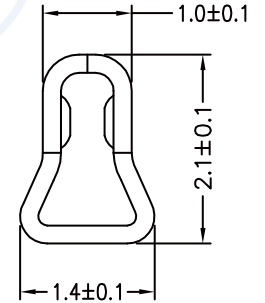
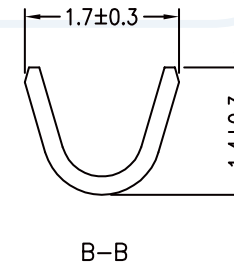
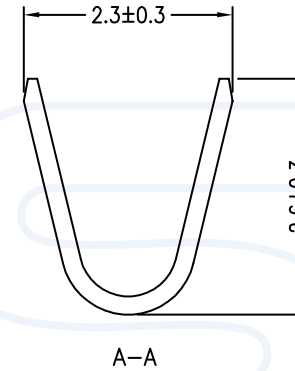
ORDERING INFORMATION

T20-XX XX



Notes:

1. Material: Phosphor bronze, C5191H HV200±5°
2. Finish: Tin-plating
3. Wire range: AWG #30~#24



YLIES 东莞市瑞翔精密连接器有限公司
DONG GUAN YLIES PRECISE CONNECTOR CO.,LTD

Tel: 0769-85381995 / Fax: 0769-85493987 / Email: ylies@ylies.cn / Web: www.ylies.cn

PROJECTON REV A UNIT mm SCALE 1:1 PAGE 1/1

TITLE

366-2.0mm 端子

DATE

2018-02-18

PART NO:

T20-S1XC

DRAWING NO: