

1 2 3 4 5 6 7 8 9

ANGLE	± 5°	REV	LOCAS	DESCRIPTION	DESIGN	DATE	卫国峰
X.XXX	± 0.05	01			DRAWN	DATE	尚伟
X.XX	± 0.15	02			CHECKED	DATE	吴汉学
X.X	± 0.25	03			AUDITED	DATE	龚劲松
X	± 0.50	04			APPROVED	DATE	eric

Specifications/备注 (Remark)

1-材料 (MATERIAL)

胶芯: PA9T UL94V-0
 Housing: PA9T UL94V-0
 端子(焊片): 黄铜 (磷青铜)
 Contact (Solder Tab): Brass (Phosphor bronze)

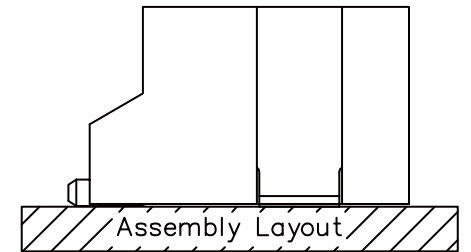
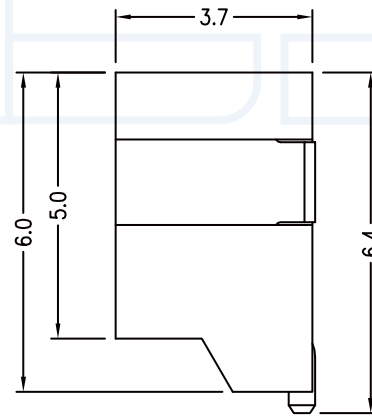
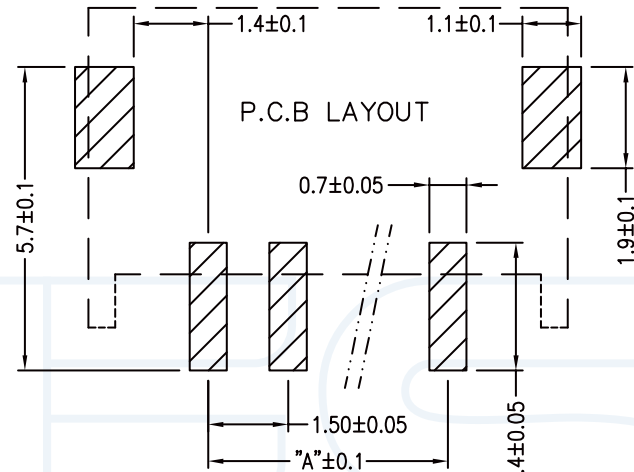
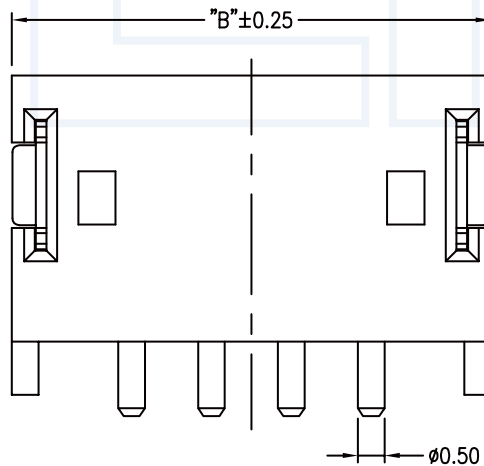
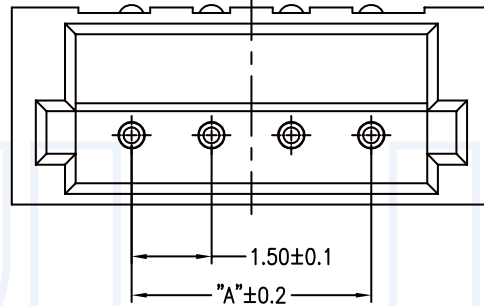
2-特性 (characteristics):

额定电压: 50V AC/DC
 Voltage Rating: 50V AC/DC
 额定电流: 1 AMP (AWG #26-32)
 Raring Current: 1 AMP (AWG #26-32)
 接触阻抗: ≤20mΩ MAX.
 Contact Resistance: ≤20mΩ MAX.
 绝缘阻抗: ≥500MΩMIN.
 Insulating Resistance: ≥500MΩMIN.
 耐电压: 500V AC/MINUTE
 Withstanding Voltage: 500V AC/MINUTE
 温度范围: -25度至+85度
 Temperature Range: -25°C to +85°C

ORDERING INFORMATION

W15-XX XX X XX X

NO. OF PINS Per Row 02-16P	INSULATOR MATERIAL A: PA46 B: PA66 C: PA9T D: LCP	PACKING A: PE Bag B: TUBE C: TRAY
SERLES NO 15: 1.5mm	CONTACT PLATING FULL OF GOLD SEMI-GOLD A0=0.8u" B0=0.8U"	CONTACT SHAPE LT: STRAIGHT SMT WT: RIGHT ANGLE SME
..... A9=30u" S1=ORDINARY TIN PLATED B9=30U" S2=MATTE TIN PLATED	
	S3=TIN-PLATED HIGH-TEMPERATURE	



Poles	DIM.A	DIM.B
2	1.5	6.0
3	3.0	7.5
4	4.5	9.0
5	6.0	10.5
6	7.5	12.0
7	9.0	13.5
8	10.5	15.0
9	12.0	16.5
10	13.5	18.0
11	15.0	19.5
12	16.5	21.0
13	18.0	22.5
14	19.5	24.0
15	21.0	25.5
16	22.5	27.0

YLIES 东莞市瑞翔精密连接器有限公司
 DONG GUAN YLIES PRECISE CONNECTOR CO.,LTD

Tel: 0769-85381995 / Fax: 0769-85493987 / Email: ylies@ylies.cn / Web: www.ylies.cn

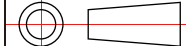
TITLE

358-1.5mm 卧贴 单排插针

DATE

2018-02-18

PROJECTON



REV

UNIT

SCALE

PAGE

1/1

PART NO:

W15-XXS1CWTB

DRAWING NO:

1 2 3 4 5 6 7 8 9