

1 2 3 4 5 6 7 8 9

ANGLE	± 5°	REV	LOCAS	DESCRIPTION	DESIGN	DATE	卫国峰
X.XXX	± 0.05	01			DRAWN	DATE	尚伟
X.XX	± 0.15	02			CHECKED	DATE	吴汉学
X.X	± 0.25	03			AUDITED	DATE	龚劲松
X	± 0.50	04			APPROVED	DATE	eric

Specifications/备注 (Remark)

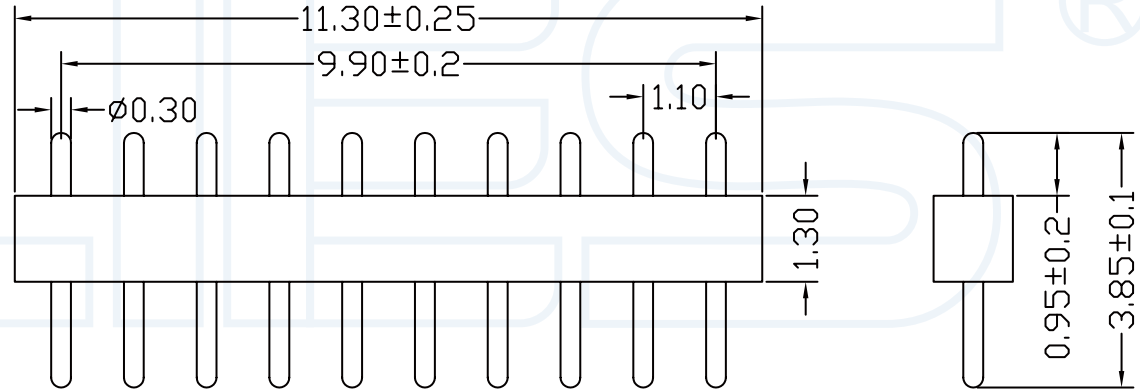
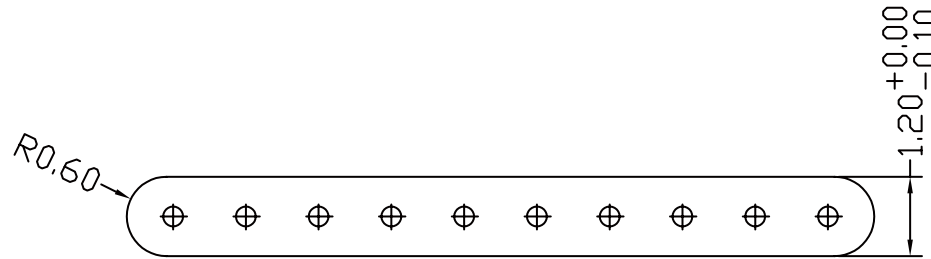
1-材料 (MATERIAL)

胶芯: PA6T+30%G. UL94V-0, 颜色: 黑色
 Housing: PA6T+30%G. UL94V-0, Color: Black
 端子: 黄铜

Contact: Brass

2-特性 (characteristics):

额定电流: 1.00 AMP
 Raring Current: 1.00 AMP .
 接触阻抗: 20mΩ MAX.
 Contact Resistance: 20mΩ MAX .
 绝缘阻抗: 1000MΩMIN.
 Insulating Resistance: 1000MΩMIN.
 耐电压: AC 500V.
 Withstanding Voltage: AC 500V.
 温度范围: -40度至+105度
 Temperture Range: -40°Cto +105°C



ORDERING INFORMATION

R1213-1 10 0 AC S 039 1

CONTACT PLATING
 A=1U"
 B=2U"

 E=15U"
 F=30U"
 S=ORDINARY TIN PLATED
 H=HALF GOLD PLATED TIN

INSULATOR MATERIAL
 B:PA6T
 C:PA9T
 D:LCP

YLIES 东莞市瑞翔精密连接器有限公司
 DONG GUAN YLIES PRECISE CONNECTOR CO.,LTD

Tel:0769-85381995 / Fax:0769-85493987 / Email: ylies@ylies.cn / Web:www.ylies.cn

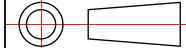
TITLE

293-1.10mm 光纤连接器

DATE

2018-02-18

PROJECTON



REV

A

UNIT

mm

SCALE

1:1

PAGE

1/1

PART NO:

R1213-1100ACS0391

DRAWING NO:

1 2 3 4 5 6 7 8 9