

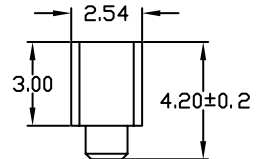
ANGLE	± 5°	REV	LOCAS	DESCRIPTION	DESIGN	DATE	卫国峰
X.XXX	± 0.05	01			DRAWN	DATE	尚伟
X.XX	± 0.15	02			CHECKED	DATE	吴汉学
X.X	± 0.25	03			AUDITED	DATE	龚劲松
X	± 0.50	04			APPROVED	DATE	eric

Specifications/备注 (Remark)

Insulator:Black glass filled polyester
 PPS-GF30-FR
 Flammability:UL94V-0
 Sleeve:Brass CuZn 36Pb3(36000)
 Contact clip(4 finger):Beryllium copper(C17200)
 Mating pin:Ø0.70 to 0.90mm or 0.635mmSQ
 Forces:(polished steel gauge Ø0.76mm)
 Insertion:1.2 N typ
 Withdrawal:0.6 N typ
 Mechancial life:min 500 cycles
 Rated current:3.0Amp
 Contact resistance:Max 10mΩ
 Dielectric resistance:Min 1000V RMS

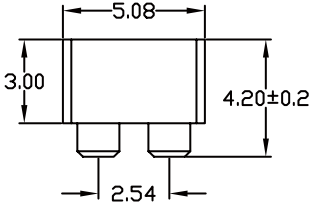
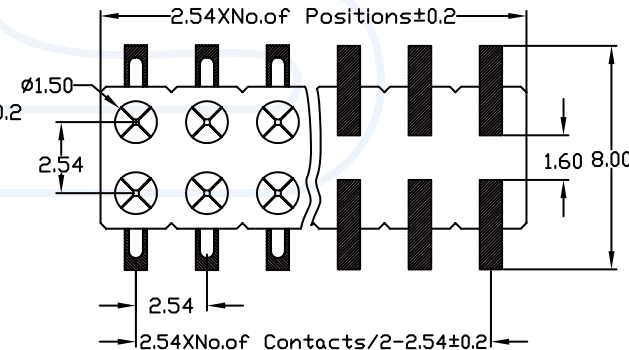
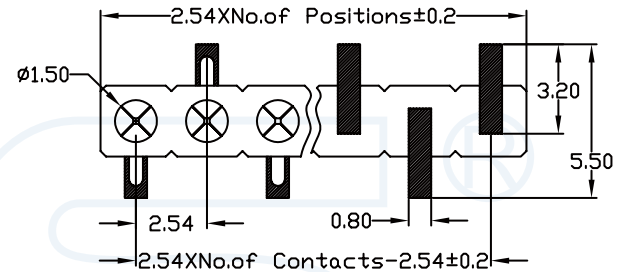
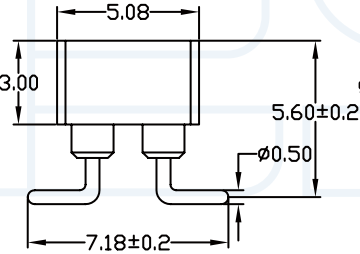
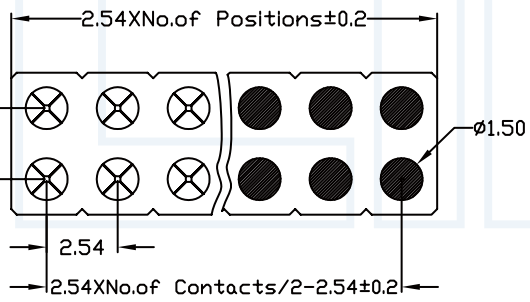
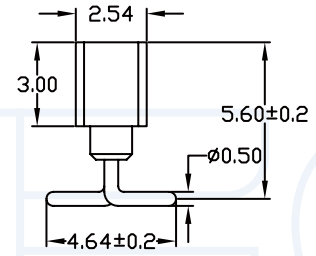
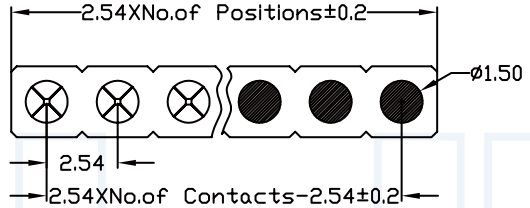
ORDERING INFORMATION
R2630-X XX X XG M XXX 1

HEIGHT OF HOUSING: 30:3.0mm
 NO. OF ARRAY PITCH: 0:NO PITCH 3:2.54mm
 INSULATOR MATERIAL: G:PPS
 NO. OF ROW: 1:SINGLE ROW NO. OF PINS PER ROW: 02-40P
 CONTACT PLATING: A=1U" B=2U" ... E=15U" F=30U" S=ORDINARY TIN PLATED H=HALF GOLD PLATED TIN
 LENGTH OF TERMINAL: 042:4.20mm 074:7.40mm



SMT socket connector, low profile single row, perpendicular
 Availability from:2 to 40 contacts
 Standard number of contacts 5, 6, 8, 9, 10, 11, 12, 14, 16, 17, 20, 25, 30, 32 and 40

SMT socket connector, low profile double row, perpendicular mount with self-levelling flating
 Availability from:4 to 80 contacts
 Standard number of contacts 64



SMT socket connector:single row, perpendicular mount with gull-wing terminations
 Availability from:3 to 40 contacts
 Standard number of contacts 5, 6, 8, 9, 10, 11, 12, 14, 16, 17, 20, 25, 30, 32 and 40

SMT socket connector:double row, perpendicular mount with gull-wing terminations
 Availability from:4 to 80 contacts
 Standard number of contacts 20, 56, 60, 64 and 72

YLIES 东莞市瑞翔精密连接器有限公司
 DONG GUAN YLIES PRECISE CONNECTOR CO.,LTD

TITLE: 281-2.54mm 圆孔排母 SMT DATE: 2018-02-18

Tel:0769-85381995 / Fax:0769-85493987 / Email: ylies@ylies.cn / Web:www.ylies.cn
 PROJECTON: [Symbol] REV: A UNIT: mm SCALE: 1:1 PAGE: 1/1

PART NO: R2630-XXXXXGMXXX1 DRAWING NO: