

ANGLE	± 5°	REV	LOCAS	DESCRIPTION	DESIGN	DATE	卫国峰
X.XXX	± 0.05	01			DRAWN	DATE	尚伟
X.XX	± 0.15	02			CHECKED	DATE	吴汉学
X.X	± 0.25	03			AUDITED	DATE	龚劲松
X	± 0.50	04			APPROVED	DATE	eric

**Specifications/备注 (Remark)**

Insulator:Black glass filled polyester  
 PPS-GF30-FR  
 Fiammability:UL94V-0  
 Sleeve:Brass CuZn 36Pb3(36000)  
 Contact clip(4 finger):Beryllium copper(C17200)  
 Mating pin:Ø0.40 to 0.56mm  
 Forces:(polished steel gauge Ø0.43mm)  
 Insertion:2.0 N typ  
 Withdrawal:1.0 N typ  
 Mechancial life:min 500 cycles  
 Rated current:3.0Amp  
 Contact resistance:Max 10mΩ  
 Dielectric resistance:Min 1000V RMS

**ORDERING INFORMATION**

**R2630-X XX X XG S XXX X**

HEIGHT OF HOUSING:  
30:3.0mm

NO.OF ROW:  
1:SINGLE ROW  
2:DUAL ROW

NO.OF ARRAY PITCH  
0:NO PITCH  
3:2.54mm

NO.OF PINS PER ROW:  
01-40P

CONTACT PLATING  
A=1U"  
B=2U"

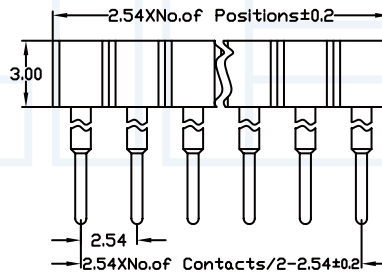
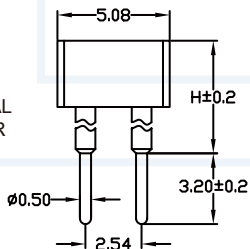
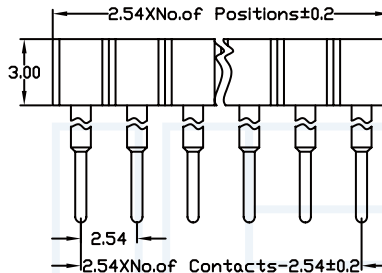
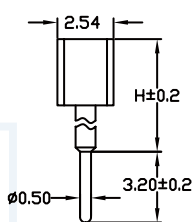
CONTACT SHAPE  
S:STRAIGHT

LENGTH OF TERMINAL  
092:9.20mm  
102:10.2mm  
112:11.2mm  
122:12.2mm  
134:13.4mm  
142:14.2mm

INSULATOR MATERIAL:  
E=15U"  
F=30U"  
S=ORDINARY TIN PLATED  
H=HALF GOLD PLATED TIN

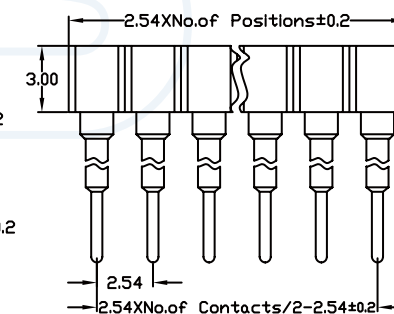
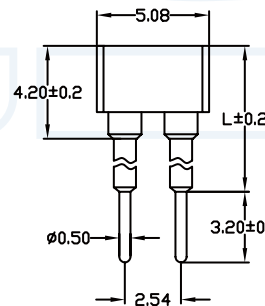
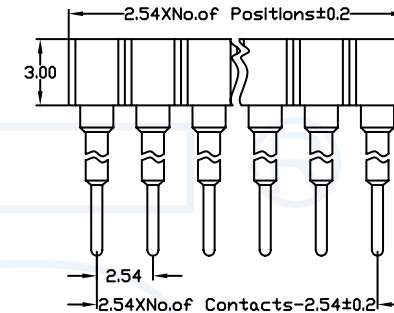
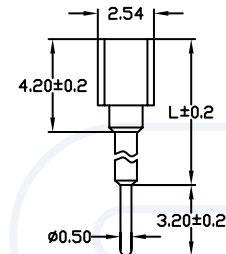
JOURNAL NUMBER  
1:TYPE1  
2:TYPE2

Contact length L:  
6.00mm, 7.00mm  
8.00mm, 9.00mm  
10.00mm, 11.00mm  
12.00mm



Contact height H:  
14.6mm  
9.00mm

Stright socket connector height  
4.2mm:solder tail, single row  
Availability from:1to 40 contacts  
Standard number of contacts 5, 6,  
8, 9, 10, 11, 12, 14, 16, 17, 20, 25, 30,  
32 and 40



Stright socket connector height  
4.2mm:solder tail, double row  
Availability from:2 to 80 contacts  
Standard number of contacts 20, 56,  
60 and 72

**YLIES** 东莞市瑞翔精密连接器有限公司  
DONG GUAN YLIES PRECISE CONNECTOR CO.,LTD

Tel:0769-85381995 / Fax:0769-85493987 / Email: ylies@ylies.cn / Web:www.ylies.cn

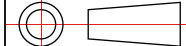
TITLE

275-2.54mm 圆孔排母 180度

DATE

2018-02-18

PROJECTON



REV

A

UNIT

mm

SCALE

1:1

PAGE

1/1

PART NO:

R2630-XXXXXGSXXXX

DRAWING NO:

1

2

3

4

5

6

7

8

9