

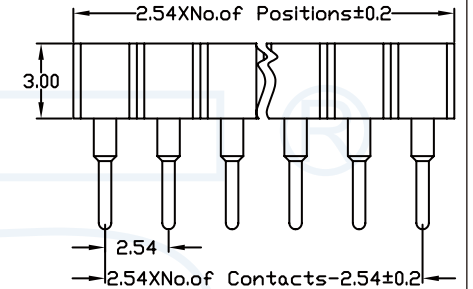
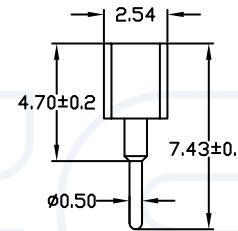
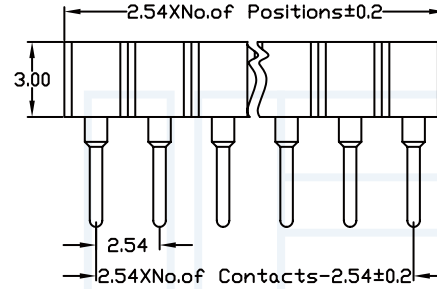
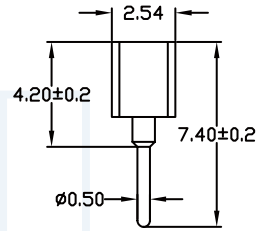
ANGLE	± 5°	REV	LOCAS	DESCRIPTION	DESIGN	DATE	卫国峰
X.XXX	± 0.05	01			DRAWN	DATE	尚伟
X.XX	± 0.15	02			CHECKED	DATE	吴汉学
X.X	± 0.25	03			AUDITED	DATE	龚劲松
X	± 0.50	04			APPROVED	DATE	eric

Specifications/备注 (Remark)

Insulator:Black glass filled polyester
 PPS-GF30-FR
 Flammability:UL94V-0
 Sleeve:Brass CuZn 36Pb3(36000)
 Contact clip(4 finger):Beryllium copper(C17200)
 Mating pin:Ø0.40 to 0.56mm
 Forces:(polished steel gauge Ø0.43mm)
 Insertion:2.0 N typ
 Withdrawal:1.0 N typ
 Mechanical life:min 500 cycles
 Rated current:3.0Amp
 Contact resistance:Max 10mΩ
 Dielectric resistance:Min 1000V RMS

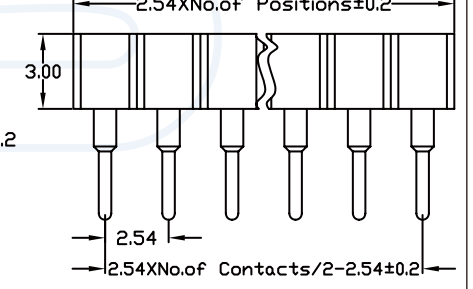
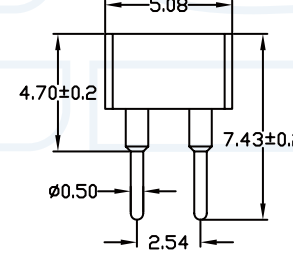
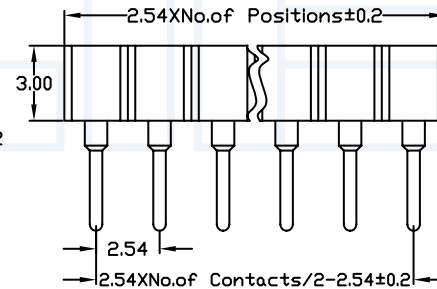
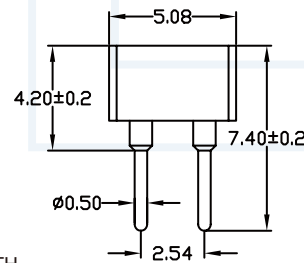
Straight socket connector height
 4.2mm:solder tail, single row
 Availability from:1 to 40 contacts
 Standard number of contacts 5, 6,
 8, 9, 10, 11, 12, 14, 16, 17, 20, 25, 30,
 32 and 40

Straight socket connector height
 4.2mm:solder tail, double row
 Availability from:2 to 80 contacts
 Standard number of contacts 20, 56, 60
 and 72



ORDERING INFORMATION R2630-X XX X XG S 074 1

HEIGHT OF HOUSING: 30:3.0mm
 NO. OF ARRAY PITCH: 0:NO PITCH 3:2.54mm
 CONTACT SHAPE: S:STRAIGHT
 NO. OF ROW: 1:SINGLE ROW NO. OF PINS PER ROW: 01-40P
 CONTACT PLATING: A=1U" B=2U" ... E=15U" F=30U" S=ORDINARY TIN PLATED H=HALF GOLD PLATED TIN
 INSULATOR MATERIAL: G:PPS
 LENGTH OF TERMINAL



Straight socket connector height
 4.7mm:solder tail, single row
 Availability from:1 to 40 contacts
 Standard number of contacts 5, 6,
 8, 9, 10, 11, 12, 14, 16, 17, 20, 25, 30,
 32 and 40

Straight socket connector height
 4.7mm:solder tail, double row
 Availability from:2 to 80 contacts
 Standard number of contacts 20, 56,
 60 and 72

YLIES 东莞市瑞翔精密连接器有限公司
 DONG GUAN YLIES PRECISE CONNECTOR CO.,LTD

Tel:0769-85381995 / Fax:0769-85493987 / Email: ylies@ylies.cn / Web:www.ylies.cn

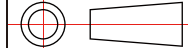
TITLE

273-2.54mm 圆孔排母 180度

DATE

2018-02-18

PROJECTON



REV
A

UNIT
mm

SCALE
1:1

PAGE
1/1

PART NO:

R2630-XXXXXGS0741

DRAWING NO: