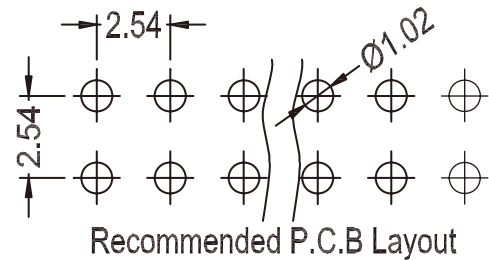
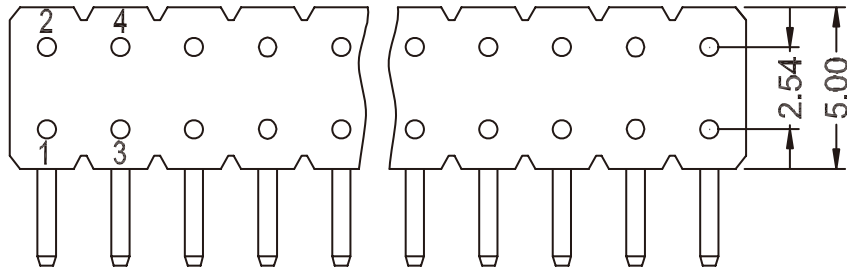


ANGLE	± 5°	REV	LOCAS	DESCRIPTION	DESIGN	DATE	卫国峰
X.XXX	± 0.05	01			DRAWN	DATE	尚伟
X.XX	± 0.15	02			CHECKED	DATE	吴汉学
X.X	± 0.25	03			AUDITED	DATE	龚劲松
X	± 0.50	04			APPROVED	DATE	eric

Specifications/备注 (Remark)

1-材料 (MATERIAL)
 胶芯: PA6T+30%G. UL94V-0, 颜色: 黑色
 Housing: PA6T+30%G. UL94V-0, Color: Black
 端子: 黄铜
 Contact: Brass

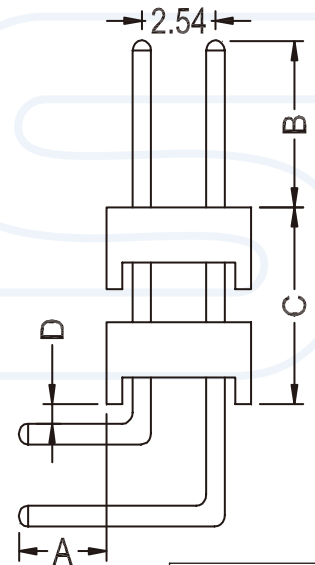
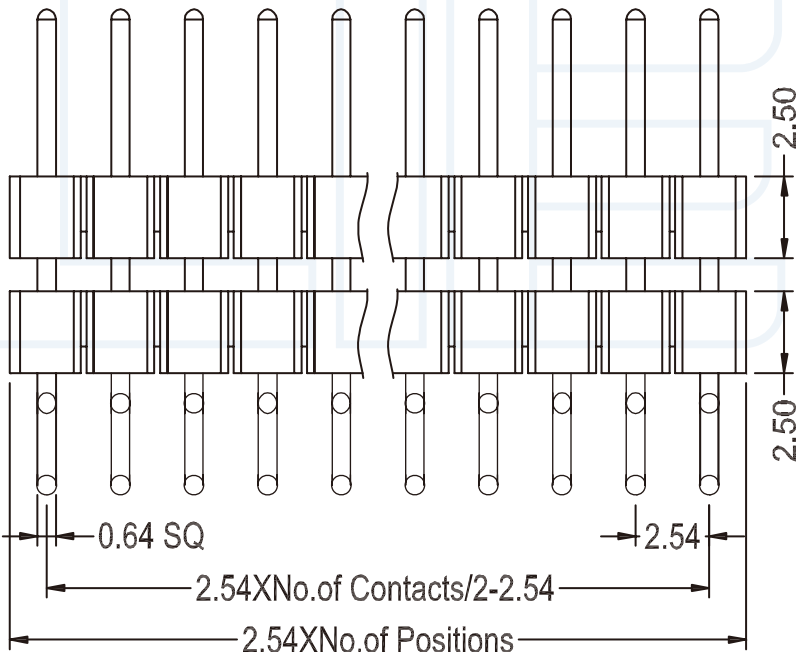
2-特性 (characteristics):
 额定电流: 3.00 AMP
 Rating Current: 3.00 AMP .
 接触阻抗: 20mΩ MAX.
 Contact Resistance: 20mΩ MAX .
 绝缘阻抗: 1000MΩMIN.
 Insulating Resistance: 1000MΩMIN.
 耐电压: AC 500V.
 Withstanding Voltage: AC 500V.
 温度范围: -40度至+105度
 Temperature Range: -40°C to +105°C



ORDERING INFORMATION

R1625-22 XX XX B R XX X X

NO. OF PIGNS PER ROW: 02-40P	INSULATOR MATERIAL: B: PA6T C: PA9T D: LCP	LENGTH OF TERMINAL	PACKING A: PE BAG B: TAPE&REEL C: TUBE D: TUBE+CAP E: TRAY
CONTACT PLATING A0=0.8U" B0=0.8U" A9=30U" B9=30U" S1=ORDINARY TIN PLATED S2=MATTE TIN PLATED S3=TIN-PLATED HIGH-TEMPERATURE	CONTACT SHAPE: S: STRAIGHT R: RIGHT ANGLE M: SMT	JOURNAL NUMBER 1: TYPE1 2: TYPE2	



ITEM	A	B	D	C
Standard	3.0	6.0	0.6	1.2
Alternate				

YLIES 东莞市瑞翔精密连接器有限公司
 DONG GUAN YLIES PRECISE CONNECTOR CO.,LTD

TITLE: 256-2.54mm 双排双塑圆针 90度
 DATE: 2018-02-18

Tel: 0769-85381995 / Fax: 0769-85493987 / Email: ylies@ylies.cn / Web: www.ylies.cn

PROJECTON REV A UNIT mm SCALE 1:1 PAGE 1/1

PART NO: R1625-22XXXXBRXXXXZ DRAWING NO: